

Android Enterprise zero-touch enrollment offers seamless deployment of corporate-owned Android™ devices



The challenge

The time your IT team spends configuring and provisioning new devices takes them away from business-critical IT activities. What’s more—depending on the number of devices, configurations and users that IT has to set up—workforce productivity can suffer while employees wait for, and set up, their devices.

Zero-touch is supported on all Android 9.0 and higher devices. It allows you to configure purchased devices online while delivering these devices directly to end users for out-of-the-box activation. Reach out to [partner name] about deploying Android Enterprise devices with zero-touch.

Securely manage Android devices at scale

Android zero-touch enrollment is a fast, simple, and secure way to mobilize your employees. With zero-touch, you can deploy devices at scale with the apps they need and the security for your peace of mind.

Automated deployment reduces dependency on internal IT support, while accelerated device delivery and simplified activation processes create better user experiences. Everybody wins with Android zero-touch.



Control

Manage fleets of devices with enforced management and security to protect your brand

- Easily deploy Android devices at scale
- Maintain control and security without the hassle
- Enroll devices in device management during initial setup
- Enforce security policies and restrictions
- Ensure devices remain registered and re-enrolled after any factory reset



Choice

Take advantage of a consistent deployment method across all manufacturers of all recent Android devices

- Experience the fastest Android setup option across all modern 9.0+ devices from a single platform
- Deploy devices from multiple Android device manufacturers across a range of form-factors and price-points



Productivity

Create a win-win for your IT team and employees by freeing up your help desk and getting employees productive faster

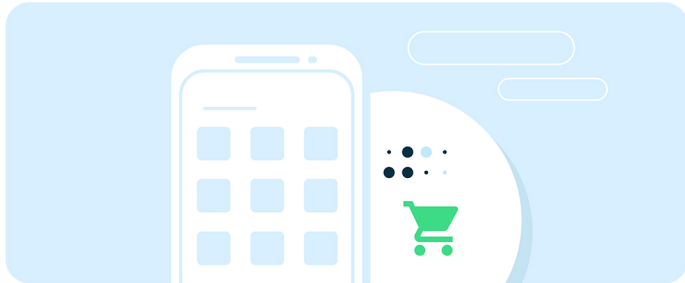
- Enroll and configure devices remotely
- Customize each device to give your users the configurations, security and apps they need - at first use
- Enable employees to self-enroll during a simple setup process on the device, without IT assistance
- Automate inventory management input

Android is a trademark of Google LLC.

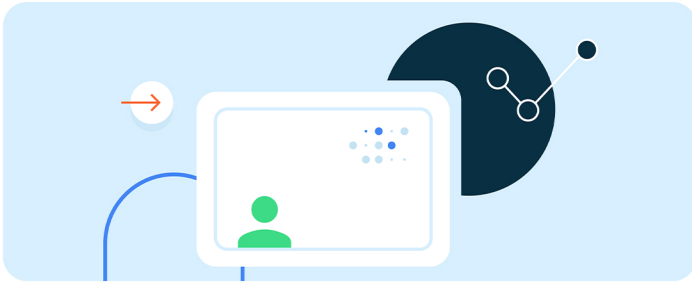
Strengthening our commitment to better serve your needs

Companies around the world deploy Android devices to mobilize employees and transform their businesses. In every use case, a successful deployment is about more than just selecting the right devices; it's about getting them configured and into the hands of users as easily and quickly as possible. More importantly, it is imperative that corporate data is protected, and therefore your brand.

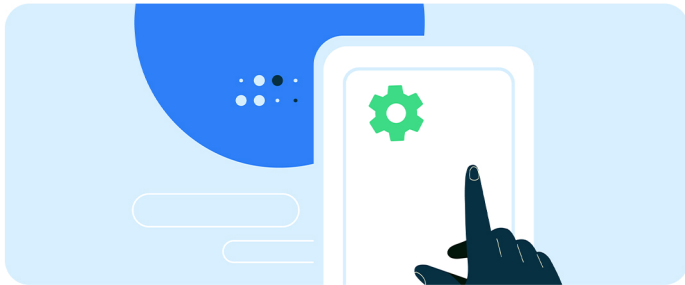
Zero-touch simplifies your inventory management as devices are directly allocated to your organization to manage. Device details are automatically added to your inventory after purchasing from a zero-touch reseller partner. In addition, zero-touch devices can be managed within your EMM console. Link your EMM and zero-touch accounts directly to automatically configure devices.



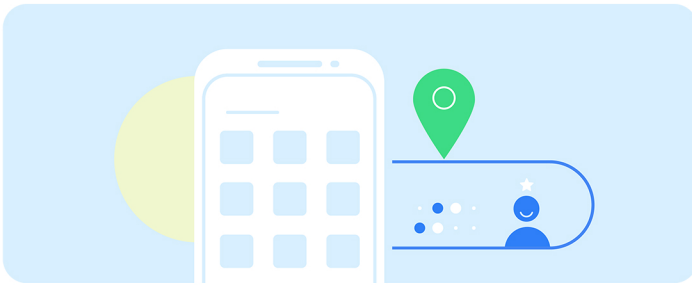
1. Enterprise customers purchase devices from reseller/carrier



2. Reseller/carrier creates new customer enrollment accounts and assigns devices



3. Enterprise customers create or edit EMM configs



4. Reseller/carrier ships devices to users for easy activation by employees with configurations automatically applied

Get started today

Contact Barcotec to discover how zero-touch enrollment can streamline provisioning for your organization.

For more information, visit the [Android zero-touch](#) enrollment webpage.